

Tedi'n mynd
am dro



**Mae adnoddau eraill ar gael gan yr
Uned Diogelwch ar y Ffyrdd yn eich Awdurdod Lleol,
neu ewch i wefan LARSOA yn www.larsoa.org.uk**

ENGHRAIFFT

Tedi'n mynd am dro

Ysgrifennwyd gan

Karen Delaney

Sarah Flynn

Jill Winstone

Graffigwaith gan

G & L Bullock Cyf

Mae'r llyfr hwn wedi'i gynhyrchu gan
Grŵp Rhanbarthol Gogledd-Orllewin Lloegr o LARSOA

Nodyn canllaw i Rieni / Gofalwyr / Athrawon

**Er mwyn eu cadw'n ddiogel ,
awgrymwn eich bod yn esbonio wrth blant
mor bwysig yw hi iddyn nhw ddal dwylo
pan fyddan nhw yn ymyl y ffordd.**

**Efallai y bydd plant hŷn yn gallu trafod beth fyddai'r sefyllfa
petai Tedi'n gyfaill i'r teulu, neu'n aelod ohono,
a sut y byddai hynny'n effeithio arnyn nhw.**

**Ein nod wrth lunio'r stori hon yw
annog plant i ddal dwylo pan fyddan nhw
yn ymyl ffyrdd, a thrwy hynny geisio'i
gwneud hi'n liai tebygol y cân nhw eu hanafu.**

Dyma Bili. Dyma Tedi.

Bydd Bili bob amser yn mynd â'i Dedi i bobman.

Bob tro y byddan nhw'n mynd allan i gerdded,

bydd Bili bob amser yn dal llaw Tedi.



Heddiw, mae Bili'n gyffro i gyd. Dyma'i
ddiwrnod cyntaf yn ôl yn yr ysgol ac mae ar dân
i weld pob un o'i ffrindiau unwaith eto.
Mae Bili'n mwynhau cerdded i'r ysgol yn fawr iawn
ac yn sôn am yr holl bethau y mae'n eu gweld
ar y daith, fel Dafydd y postmon yn
dosbarthu llythyrau a Siân, y wraig lolipop,
yn helpu'r plant i groesi'r ffordd.





**Mae Mam yn dweud, “Gwna’n siŵr bod dy got
amdanat ti a bod dy sgidiau glaw ar dy draed.
Mae hi wedi bod yn bwrw glaw heddiw.”**

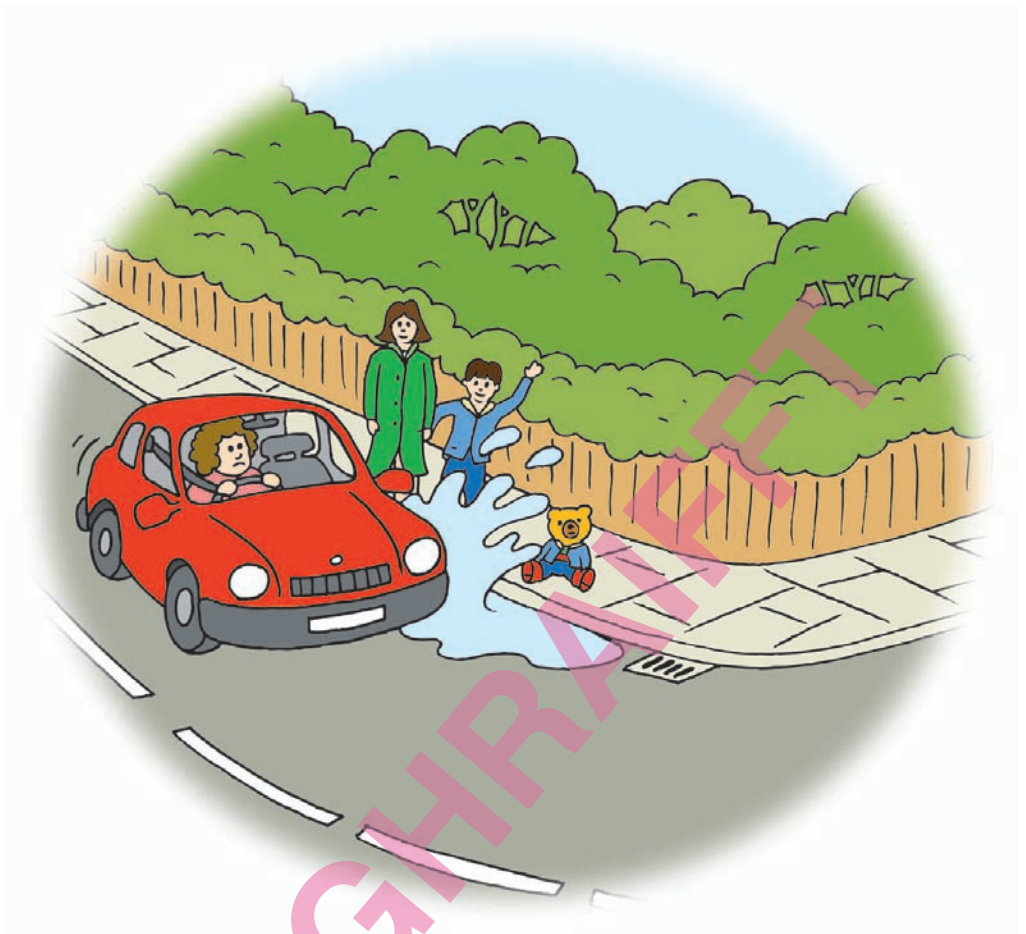
Mae Mam, Bili a Tedi yn dal dwylo ac
yn cychwyn ar eu taith i'r ysgol.

Ar y ffordd, mae Dafydd y postmon yn codi'i law
ac yn dweud "Bore da" yn hwyliog wrthyn nhw.





**Mae bus mawr melyn yn mynd heibio iddyn nhw.
Mae'n mynd â rhai plant i'r ysgol. Mae dynion yn
gwneud twll yn y ffordd yn swllyd iawn
wrth iddyn nhw gerdded heibio.**



Wrth iddyn nhw ddod at y gornel, mae Bili'n gweld ffrind iddo yr ochr arall i'r ffordd.

Mae Bili'n gollwng llaw Tedi er mwyn codi llaw ar ei ffrind. Mae Tedi'n syrthio'n beryglus o agos at y ffordd. Yr union eiliad honno, mae car yn dod rownd y gornel ac yn tasgu dŵr dros y lle i gyd!

Mae'r dŵr yn tasgu dros Tedi am ei fod yn rhy agos
at y ffordd. Druan o Tedi! Mae'n wlyb at ei groen
ac wedi anafu ei ben-glin a'i benelin.
Mae Tedi wedi dychryn yn lân.



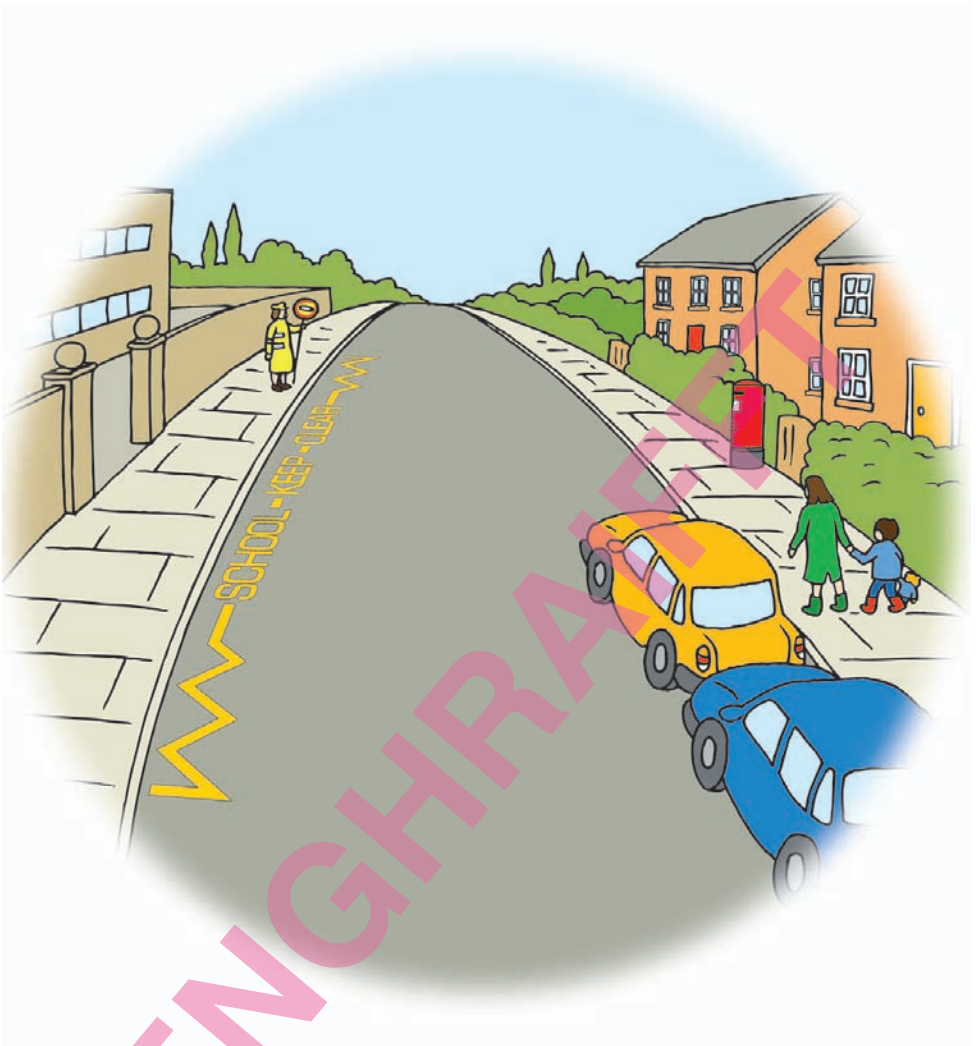
“Mae Tedi’n ffodus iawn na wnaeth syrthio i’r ffordd, Bili,” meddai Mam. “Dylet ti bob amser ddal dy afael ar law Tedi!”





Mae Bili'n codi Tedi ac yn dal ei law wrth iddyn nhw gerdded at yr ysgol.

Mae Mam yn dweud y dylen nhw chwilio am le mwy diogel i groesi'r ffordd, rhywle fel Croesfan Pelican neu Groesfan Sebra.



Wrth iddyn nhw ddod at yr ysgol, maen nhw'n gweld llawer o geir wedi'u parcio. Am nad ydy hi'n hawdd croesi rhwng ceir sydd wedi'u parcio, maen nhw'n mynd ymhellach ar hyd y ffordd nes cyrraedd lle mae Siân y Wraig Lolipop yn helpu pobl i groesi.

Mae Mam, Bili a Tedi yn aros wrth ymyl y palmant.
Maen nhw'n edrych o'u cwmpas ac yn
gwrando am draffig.

Maen nhw'n aros i Siân y Wraig Lolipop
stopio'r traffig a dweud wrthyn nhw
ei bod yn ddiogel iddyn nhw groesi.

Pan fydd yr holl draffig wedi stopio, byddan nhw'n
croesi'r ffordd i'r ysgol yn ddiogel ond yn
edrych ac yn gwrando am draffig ar hyd yr amser.



**Mae Mam, Bili a Tedi'n cyrraedd buarth
yr ysgol yn ddiogel.**

**Mae Bili'n gwasgu Tedi ato ac yn sibrwd yn ei glust,
"Bydda i bob amser yn dal dy law ac
yn dy gadw di'n ddiogel o hyn ymlaen."**





“Cofiwch ddal dwylo bob amser a chadw’n ddiogel.”

**Faint o leodd mwy diogel i groesi wrthyn nhw
fyddwch chi'n eu gweld wrth i chi fynd
i'r ysgol neu'r siopau?**

Ticiwch y blwch pan welwch chi un o'r rhain:



Croesfan Pelican



Croesfan Pâl



Pont Droed



Ffordd dan Ddaear



Goleuadau Traffig



Croesfan Sebra



Ynys i Gerddwyr



Dyn/Gwraig Lolipop



Swyddog Heddlu



Twcan



LOCAL AUTHORITY
LARSOA
ROAD SAFETY OFFICERS' ASSOCIATION
NORTH WEST REGIONAL GROUP

MAE LARSOA GOGLEDD-ORLLEWIN LLOEGR YN CEFNOGI DIOGELWCH PLANT

www.larsoa.org.uk

Cynhyrchwyd y llyfryn hwn gan:
GRŴP RHANBARTHOL GOGLEDD-ORLLEWIN LLOEGR O LARSOA

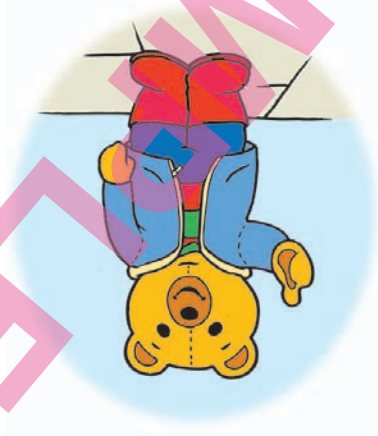
Hawlfraint © Grŵp Rhanbarthol Gogledd-Orllewin Lloegr o LARSOA 2009
Cedwir pob hawl. Ni cheir atgynhyrchu unrhyw ran o'r llyfr hwn, ei storio mewn system adfer
na'i throsglwyddo ar unrhyw ffurf na thrwy unrhyw gyfrwng heb gael caniatâd ymlaen llaw
gan Ysgrifennydd Mygedol Grŵp Rhanbarthol Gogledd-Orllewin Lloegr o LARSOA.

Copyright © LARSOA NW Group 2008
All rights reserved. No part of this book may be reproduced, stored in a retrieval system or transmitted, in any form or by what ever means, without the prior permission of the Hon Secretary, LARSOA NW Group.

This booklet has been produced by:
LARSOA NORTH WEST REGIONAL GROUP
No reproduction without
expressed permission of the Group.

www.larsoa.org.uk

NW LARSOA SUPPORTS CHILD SAFETY



Police Officer



Toucan



Pedestrian Island



Lollipop Man/Lady



Traffic Lights



Zebra Crossing



How many safer places to cross do you see on your journey to school or the shops?

Tick the box when you have seen these:



Pelican Crossing



Footbridge



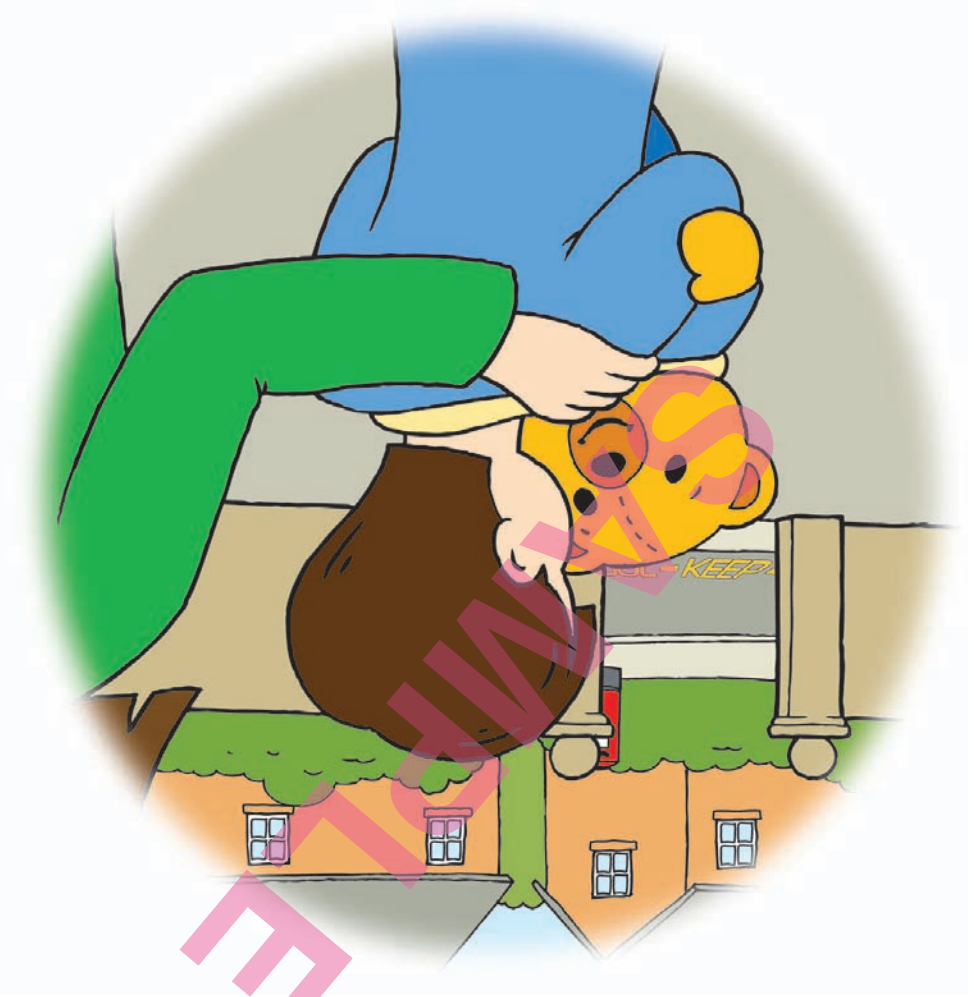
Puffin Crossing



Subway

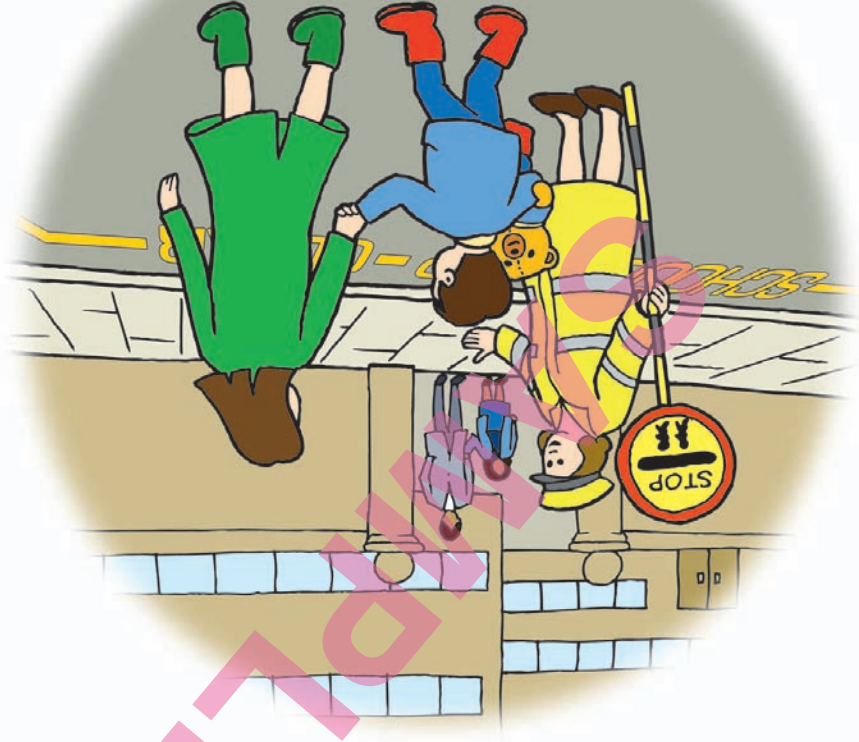
“Always hold hands and keep safe.”





Mummy, Billy and Teddy arrive safely in
the school playground.
Billy gives Teddy a big hug and whispers
to him, "I will always hold your hand and
keep you safe from now on."

Mummy, Billy and Teddy stop at the kerb. They look all around and listen for traffic. They wait for Vera the Lollipop Lady to stop the traffic and tell them when it is safe to cross. When all the traffic has stopped they safely cross the road to school, looking and listening for traffic all the time.



As they get nearer to school they see there are lots of parked cars. It is not easy to cross between parked cars so they move further up the road to where Vera the Lollipop Lady helps people to cross.

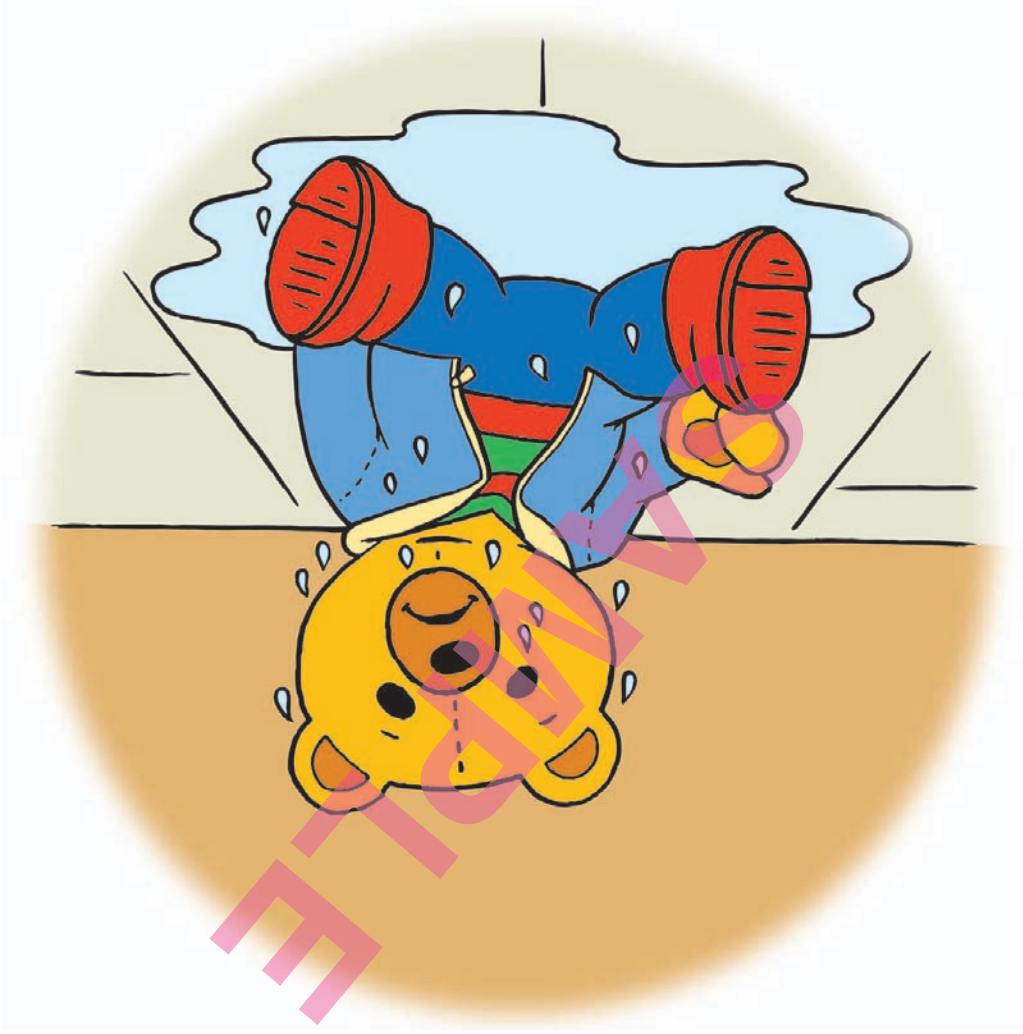


Billy picks Teddy up and holds his hand as they walk towards school. Mummy says they should find a safer place to cross the road, like a Pelican Crossing or a Zebra Crossing.



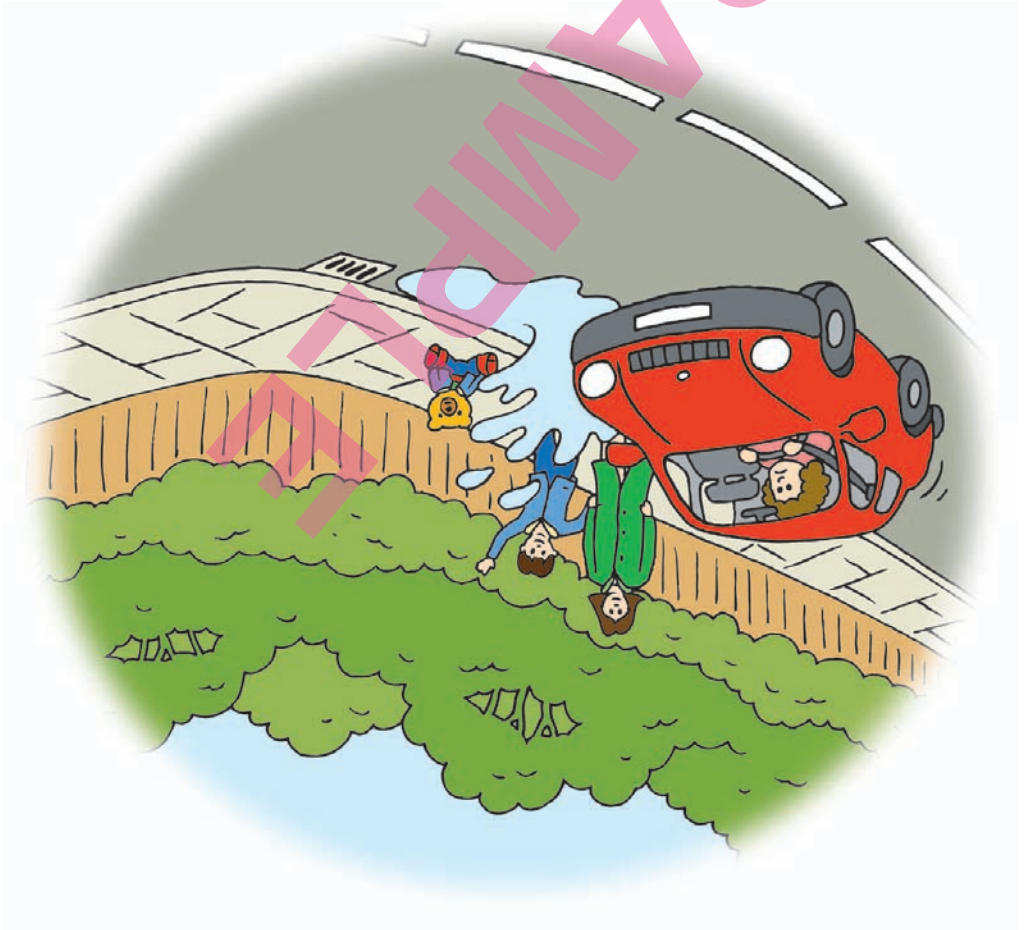


“Teddy is very lucky he did not fall into the road Billy,” says Mummy. “You should always keep hold of Teddy’s hand!”

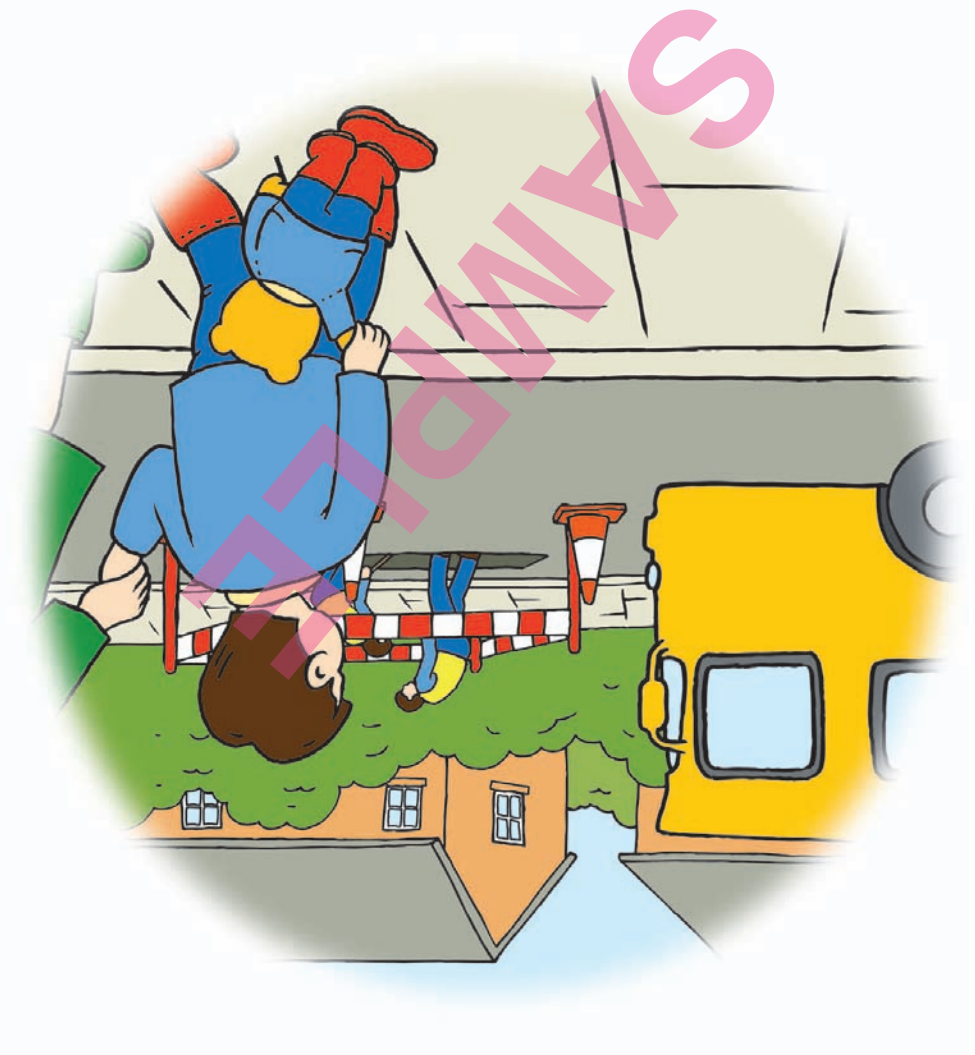


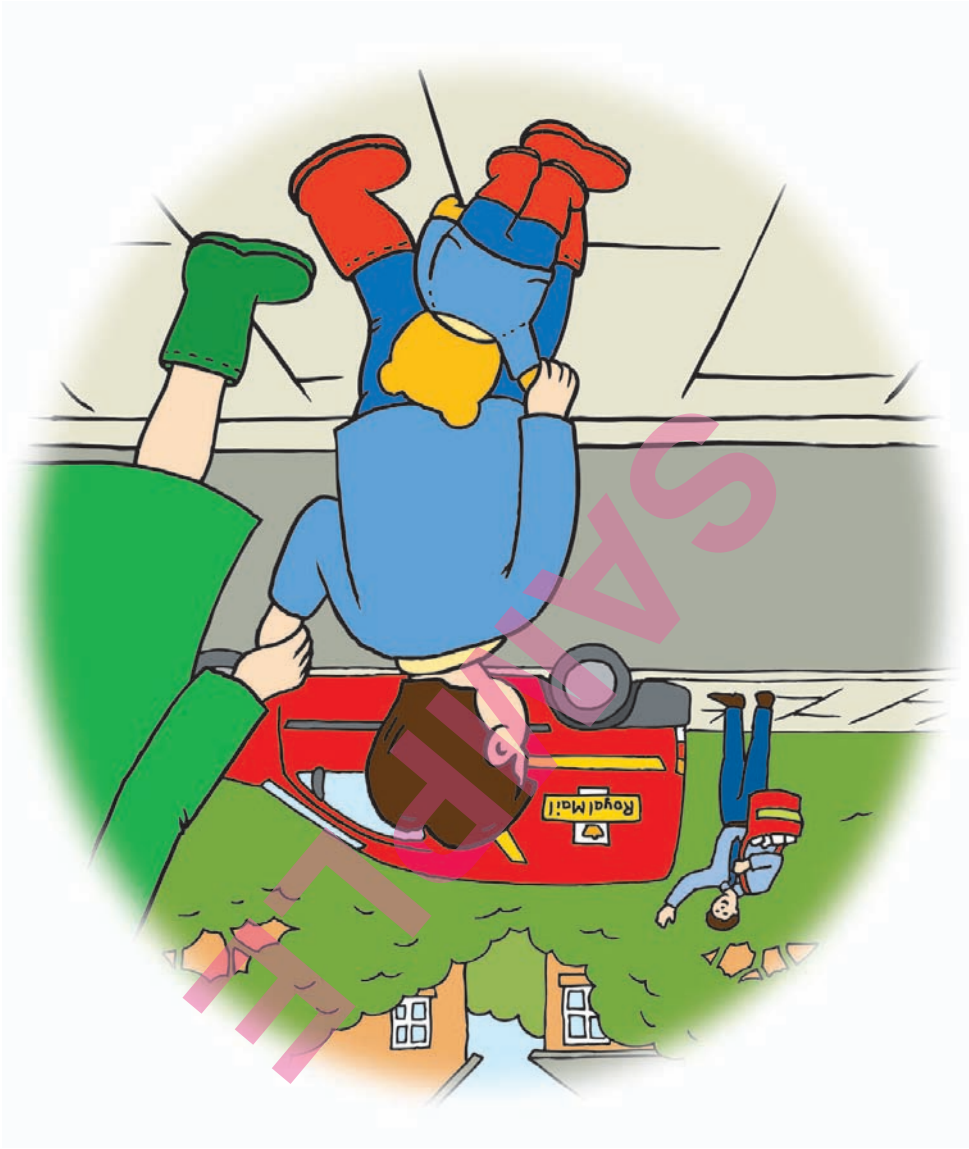
The water hits Teddy who is too close to the road. Poor Teddy! He is soaking wet and has hurt his knee and his elbow. Teddy is very upset and scared by what has happened.

As they walk towards the corner Billy sees a friend on the other side of the road. Billy lets go of Teddy's hand so he can wave to his friend and drops Teddy dangerously close to the road. Just then a car comes to the corner and splashes through a great big puddle!



A big yellow bus passes them. It is taking some children to school. There are some men digging the road, it is very noisy as they walk past.



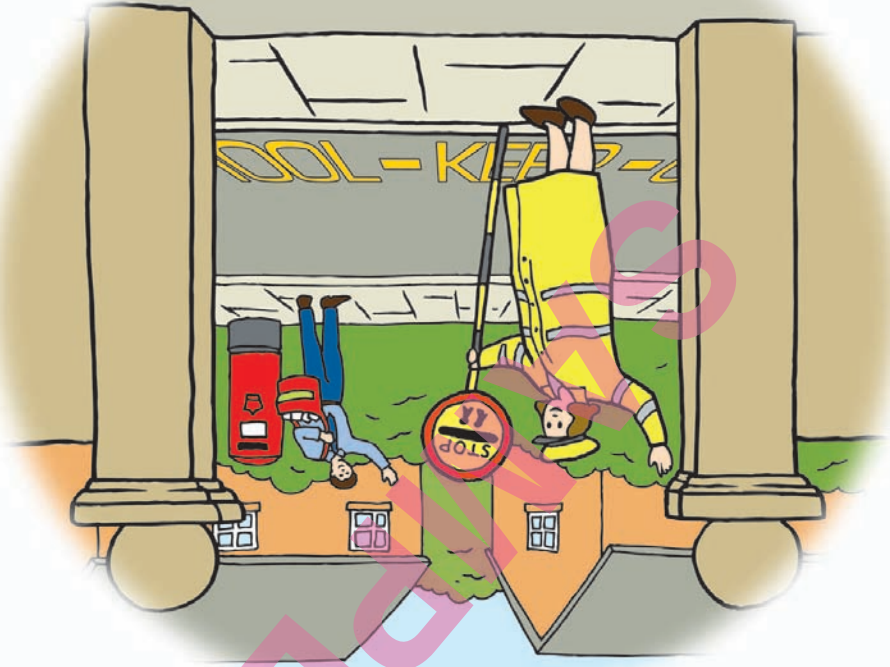


Mummy, Billy and Teddy hold hands and set off on their journey to school. On the way Dave the postman waves and cheerfully says "Good morning" to them.

Mummy says, "Make sure you have your coat and wellies on as it has been raining today".



Today Billy is excited, it is his first day
back at school and he can't wait to
see all his friends again.
Billy loves walking to school and talks
about all the things he sees on his
journey, like Dave the postman posting
the letters and Vera the lollipop lady,
helping the children cross the road.





This is Billy. This is Teddy.
Billy always takes his Teddy everywhere.
Every time they go out walking he always
holds Teddy's hand.

Guidance note for Parents/Carers/Teachers

When reading we suggest that the importance of holding hands when near the road is explained to children to help to keep them safe.

Older children may be able to discuss the implications if Teddy was a friend or family member and how this would affect them.

Our aim in writing this story is to try and reduce the likelihood of injury to children by encouraging them to hold hands when near roads.

Teddy takes a walk

Written By

Karen Delaney

Sarah Flynn

Jill Winstone

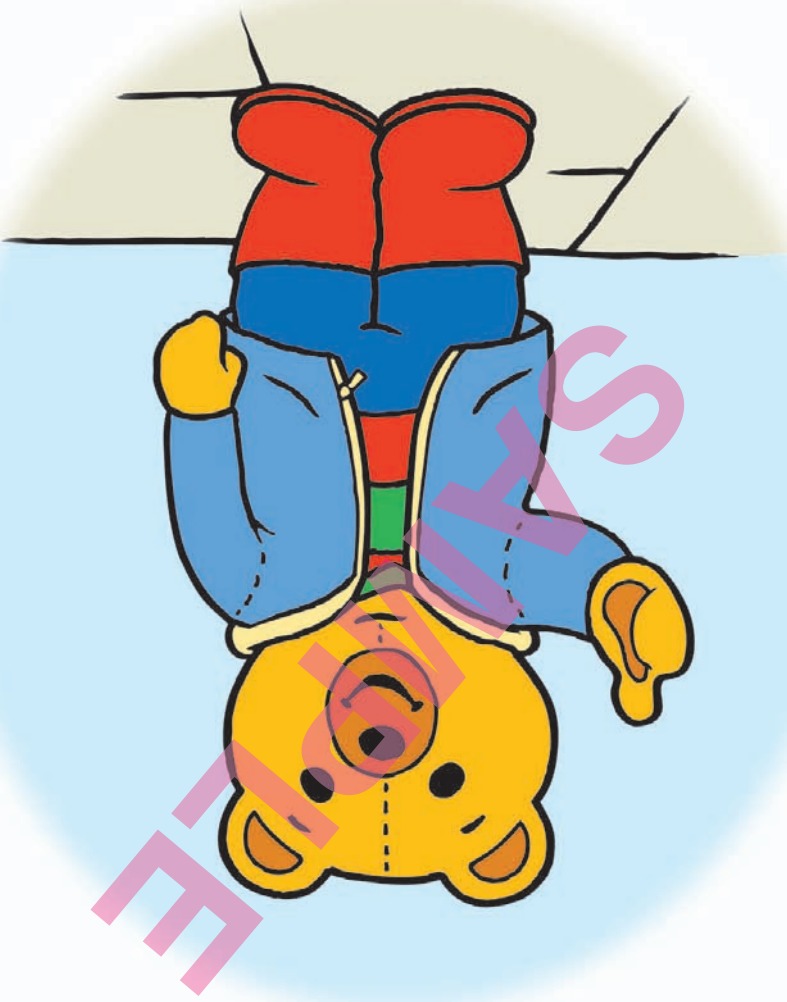
Graphics by

G & L Bullock Ltd

This book has been produced by
LARSOA North West Regional Group

Other resources are available from your
Local Authority Road Safety Unit
or visit the LARSOA website on: www.larsoa.org.uk

SAMPLE



Teddy takes
a walk